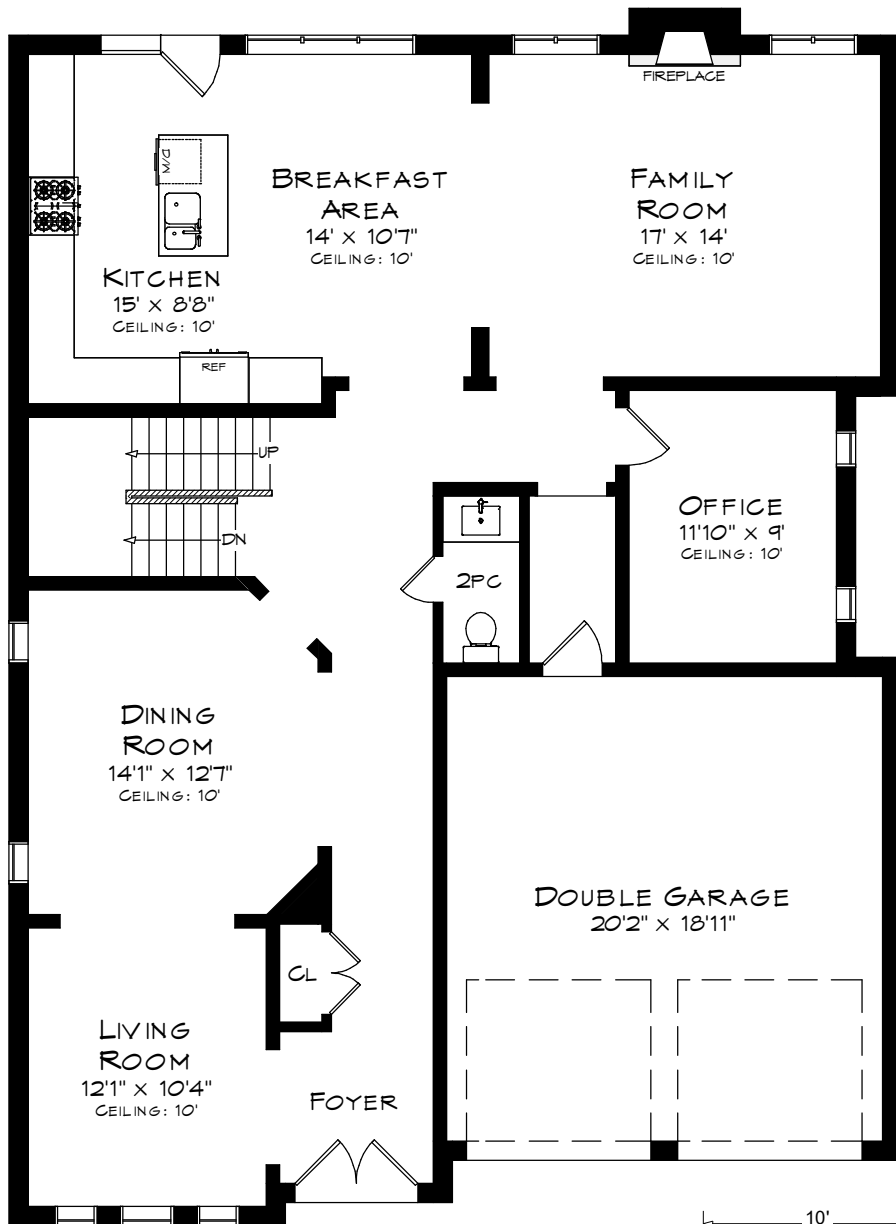
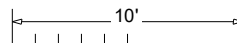


# 37 NORTH PARK BLVD

TOTAL SQUARE FOOTAGE  
4,872 SQ.FT.

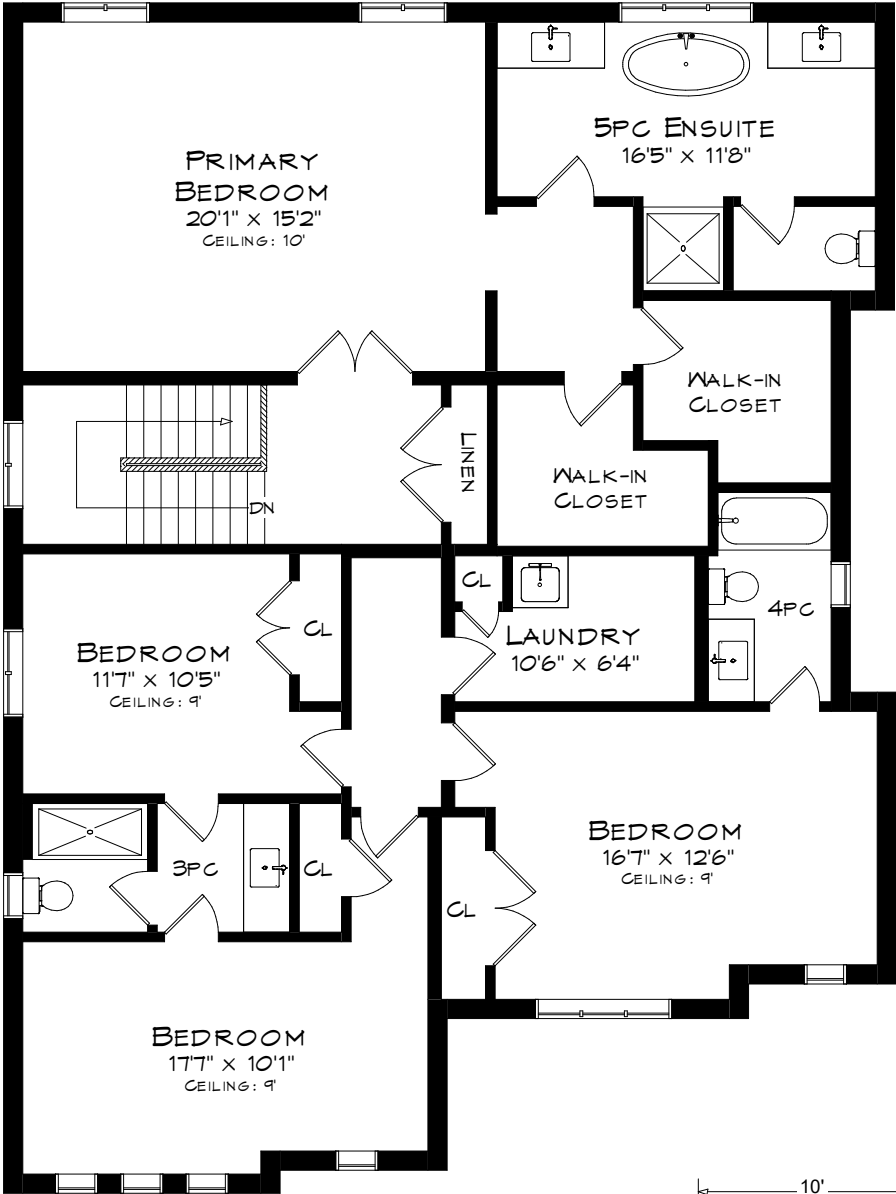


MAIN LEVEL  
1,509 SQUARE FEET  
+ 417 SF (GARAGE)

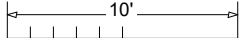


Measurements may not be 100% accurate  
and should be used as a guideline only.  
April - 2026

# 37 NORTH PARK BLVD

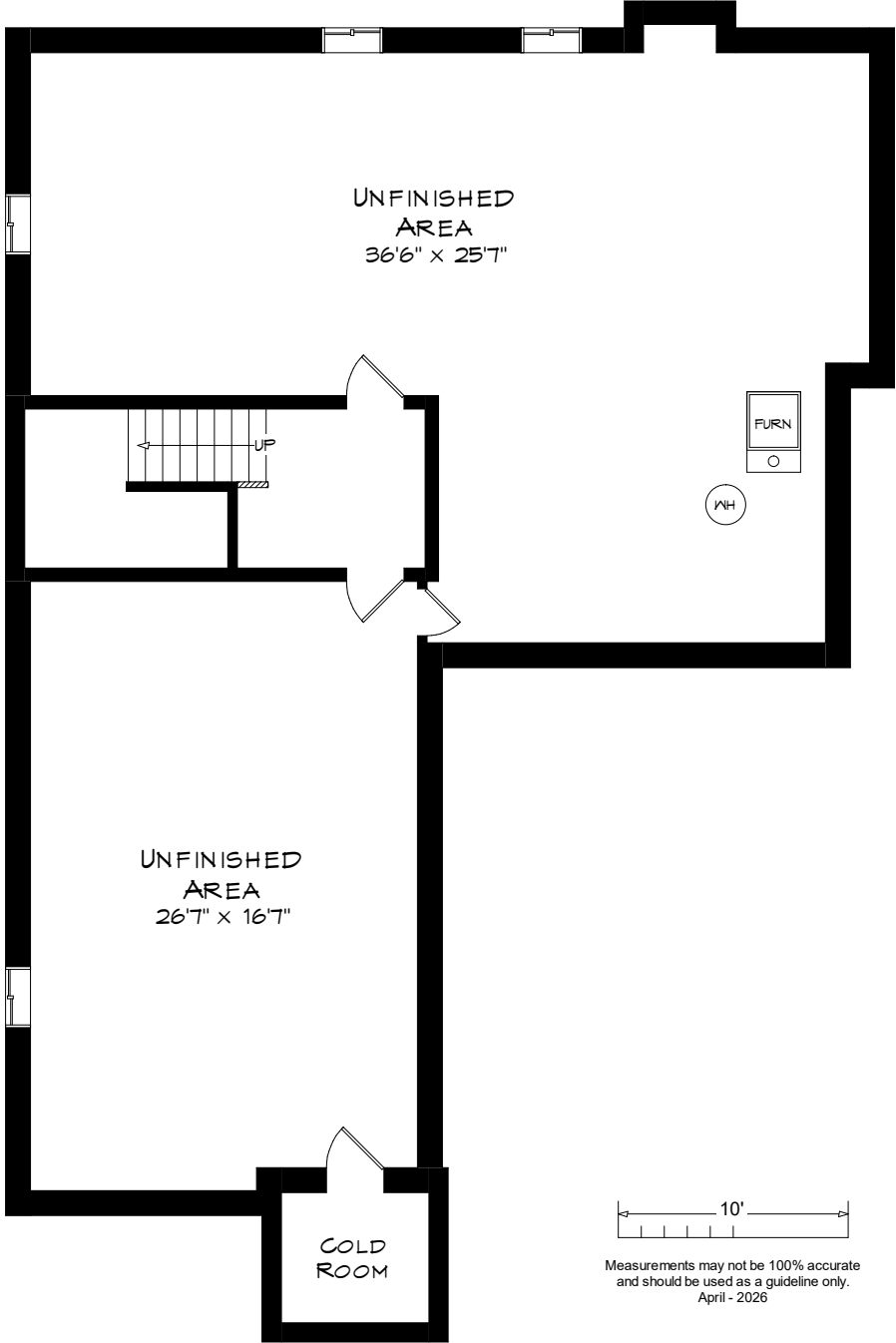


UPPER LEVEL  
1,805 SQUARE FEET



Measurements may not be 100% accurate  
and should be used as a guideline only.  
April - 2026

# 37 NORTH PARK BLVD



Measurements may not be 100% accurate and should be used as a guideline only.  
April - 2026

LOWER LEVEL  
1,558 SQUARE FEET